



# WELCH ALLYN® RETINAVUE® NETWORK SOFTWARE

**ENSURE SECURE TRANSFER OF  
ENCRYPTED RETINAL IMAGES AND  
MANAGEMENT OF EXAM DATA.**

RetinaVue Network is a turnkey teleretinal software application designed to meet your workflow and administrative needs. It includes comprehensive population health management and quality reporting tools to more effectively manage retinal exam data.

To streamline documentation, fully integrated, bi-directional interfaces with EMRs including Allscripts®, athenahealth®, Cerner®, Epic®, NextGen® and many others are offered. Place retinal exam orders and automatically access diagnostic reports from your EMR.



## Made for Primary Care

**Designed to scale  
with your organization**

- Quickly schedule patients
- Safely transmit retinal exams
- View clear statistics
- Easily find diagnostic reports
- Manage clinics and users in one place



The RetinaVue<sup>®</sup> Network software enables efficient and secure clinical workflows for diabetic retinal exams in primary care.

RetinaVue Network software plans include:



### End-to-End Security

- HIPAA/HITECH Compliant
- SOC-2 Type II Certification
  - Hosted on secure Microsoft<sup>®</sup> Azure Cloud
  - Transaction logging and 24/7 server monitoring
  - Comprehensive data backup and recovery



### Scalability

- Flexible and scalable cloud-based network
- Accurate ICD-10 coding to support HCC documentation for improved care coordination and risk-adjustment coverage
- Repository for accurate reimbursement and billing documentation



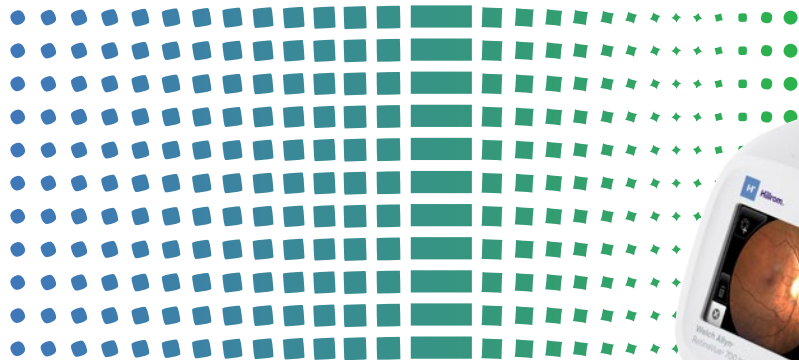
### Ease-of-Use

- Simple integration with RetinaVue Imagers
- Ongoing software updates and improvements
- Access to our dedicated support team
- Diagnostic tools to improve image readability



### Connectivity

- Wireless RetinaVue Imager connectivity for streamlined workflows
- Standard HL7 bi-directional EMR connectivity
- Continuous, real-time access to clinical statistics and diagnostic



For more information, please visit [retinavue.com](http://retinavue.com).

**hillrom.com**

Allscripts<sup>®</sup> is a registered trademark of Allscripts Software, LLC.  
 Athenahealth<sup>®</sup> is a registered trademark of Athenahealth, Inc.  
 Cerner<sup>®</sup> is a registered trademark of Cerner Innovation, Inc.  
 Epic<sup>®</sup> is a registered trademark of Epic Systems Corp  
 NextGen<sup>®</sup> is a registered trademark of NXGN Management LLC.