

Welch Allyn PCH100 and PCH200 Installation Guide

WelchAllyn[®]

Advancing Frontline Care™

Copyright 2006 - 2013 Welch Allyn. All rights are reserved. No one is permitted to reproduce or duplicate, in any form, this manual or any part thereof without permission from Welch Allyn.

Welch Allyn or its vendors assume no responsibility for any injury to anyone, or for any illegal or improper use of the product, that may result from failure to use this product in accordance with the instructions, cautions, warnings, or statement of intended use published in this manual.

Welch Allyn, PCH100 and PCH200 are registered trademarks of Welch Allyn.

SD is a trademark of Toshiba.

Bluetooth is a trademark of Bluetooth SIG, Inc., USA.

Software in this product is Copyright 2006 - 2013 Welch Allyn or its vendors. All rights are reserved. The software is protected by United States of America copyright laws and international treaty provisions applicable worldwide. Under such laws, the licensee is entitled to use the copy of the software incorporated with this instrument as intended in the operation of the product in which it is embedded. The software may not be copied, decompiled, reverse engineered, disassembled, or otherwise reduced to human-perceivable form. This is not a sale of the software or any copy of the software; all right, title, and ownership of the software remain with Welch Allyn or its vendors.

For information about any Welch Allyn product, call Welch Allyn Technical Support:

USA +1 800 535 6663 +1 315 685 4560	Australia +61 2 9638 3000 +800 074 793
Canada +1 800 561 8797	China +86 21 6327 9631
European Call Center +353 46 90 67790	France +33 1 55 69 58 49
Germany +49 7477 9271 70	Japan +81 3 3219 0071
Latin America +1 305 669 9003	Netherlands +31 157 505 000
Singapore +65 6419 8100	South Africa +27 11 777 7555
United Kingdom +44 207 365 6780	Sweden +46 85 853 6551



Reorder Number: 006-700-0075

Global Instrumentation Part Number: 006-700-0075 Version: L

Refer to WEB Site “www.WelchAllyn.com” for device directions for use and supporting documentation. To obtain a paper copy of the device directions for use, please contact Welch Allyn

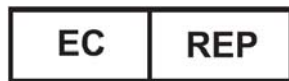
Manufactured For:

Welch Allyn
4341 State Street Road
Skaneateles Falls, New York 13153 U.S.A.



Manufactured by:
Manufacturer:

Global Instrumentation, LLC.
8104 Cazenovia Rd.
Manlius, New York 13104 U.S.A.



Contract Medical International GmbH
Lauensteiner Strasse 37
01277 Dresden
Germany
Tel.: +49 (0) 351 213 88 88
Fax: +49 (0) 351 213 88 99
Contact: European Regulatory Manager
E-mail: tlenihan@contract-medical.com

Table of Contents

BEFORE INSTALLING	7
1. INSTALLATION CHECKLIST	7
2. INSTALL HOLTER APPLICATION.....	9
3. INSTALLING THE USB BLUETOOTH® ADAPTER	13
4. ACTIVATING THE WA HOLTER APPLICATION LICENSE.....	18
5. INSTALL SD CARD READER	18
6. USB HIBERNATION.....	19
7. COMPLETE PCH100/200 STANDALONE INSTALLATION CHECK-OFF SHEET	22

Before Installing

Overview: Please read the entire installation instructions before proceeding with the installation.

NOTE: Installation should only be completed by users with administrative privileges.

NOTE: Follow the steps below sequentially:

1. Complete Installation Checklist
2. Install Holter application
3. Install USB Bluetooth® Adapter
4. Install SD Card Reader
5. Turn off USB Port Hibernation
6. Finished

1. Installation Checklist

Overview: The Installation checklist helps evaluate the PC system to determine which components are required. Steps are outlined below:

- Determine PC Operation System and service pack
- Determine McAfee antivirus version
- Determine if other Bluetooth® devices are already installed

The minimum Operating Systems and Service Packs are below. If your system does not have the following minimum requirements, select an alternate system for installation.

- Microsoft Windows XP Operating System with, SP2 or higher.
- Microsoft Windows 2003 Server
- Microsoft Windows 2008 Server
- Microsoft Windows Vista (32 and 64 Bit)
 - ✓ Home Premium
 - ✓ Business
 - ✓ Enterprise
- Microsoft Windows 7 (32 and 64 Bit)
- Microsoft Windows 8 (32 and 64 Bit)



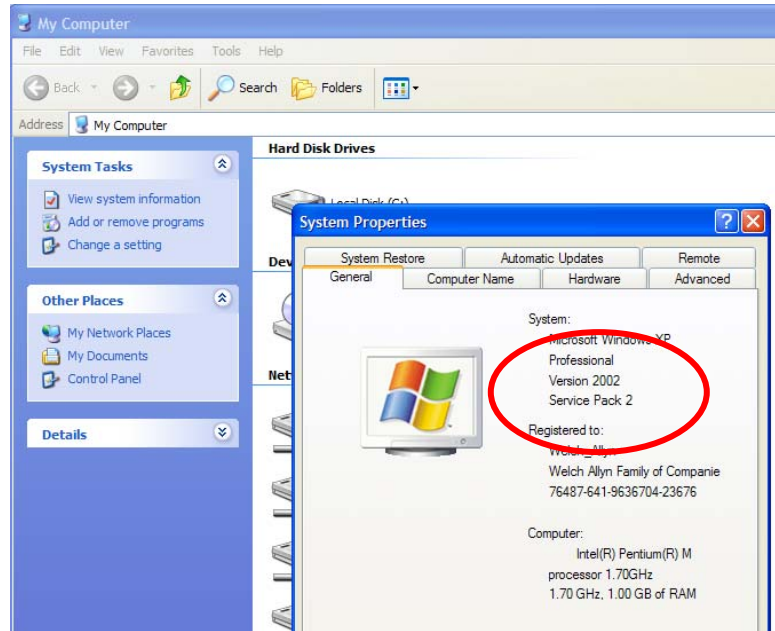
Advancing Frontline Care™

1.1 Determine Operating System and Service Pack

1. Go to My Computer.
2. View System Information. (You may upgrade Service Packs from Microsoft website at no cost.) – Note: this may take several hours.


Enter OS Version: _____

Enter Service Pack Number: _____



1.2 Determine McAfee Antivirus Version

McAfee Antivirus software versions prior to version 11 cause compatibility issues with USB Bluetooth® Device.

To determine if McAfee is running look in the bottom right corner (task bar) of the display for this icon . Highlight, right-click and view **About**.

The options are:

- Upgrade to version 11.0 or higher
- Remove McAfee and purchase another antivirus program.
- Leave as is – will require installation of USB Bluetooth® Adapter software

WelchAllyn®

Advancing Frontline Care™

2. Install Holter Application

Overview:

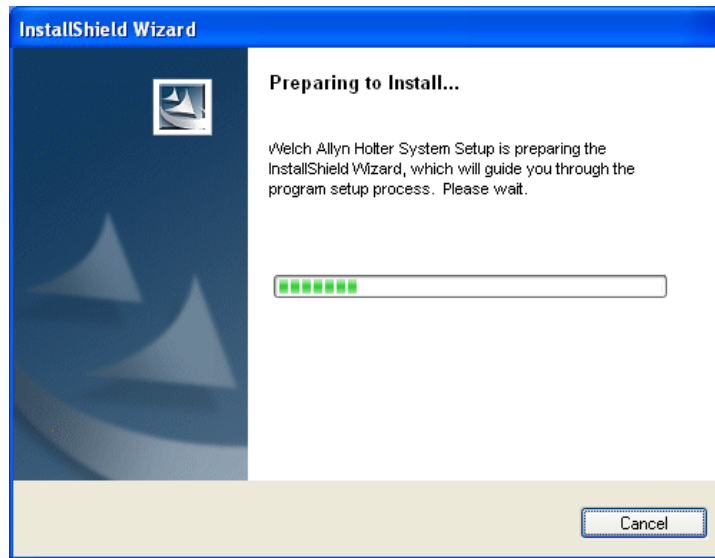
- Insert CD
- Install .Net Framework
- Install Application
- Install Database
- Finish

2.1 Insert the CD into the CD ROM Drive.

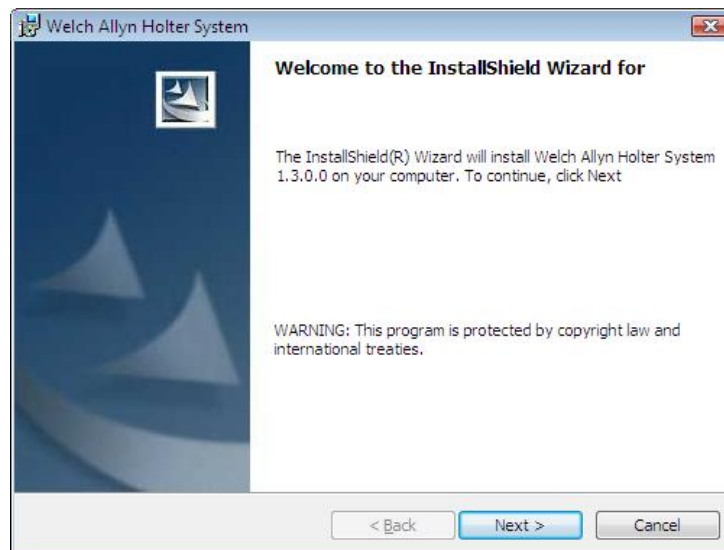
Note: If installation program does not start up Select Start > Run. Then enter “D:\Setup.exe” or browse the CD drive and select the “Setup.exe” program.

Note: If re-installing system that was previously installed at a modified location; it is required that the registry for WAHolter be removed.

2.2 The following screen is displayed.



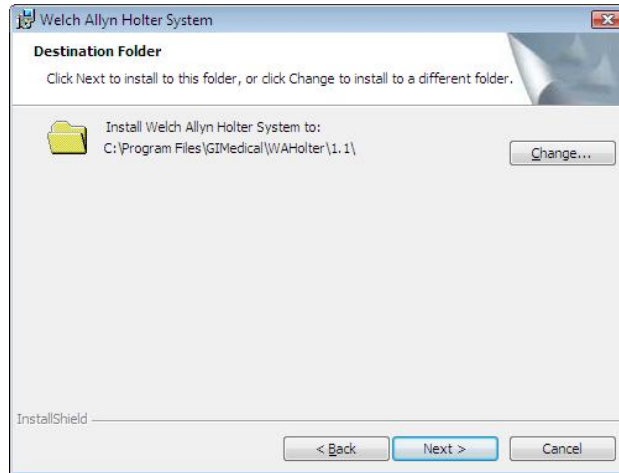
2.3 Click **OK** and the following screen appears:



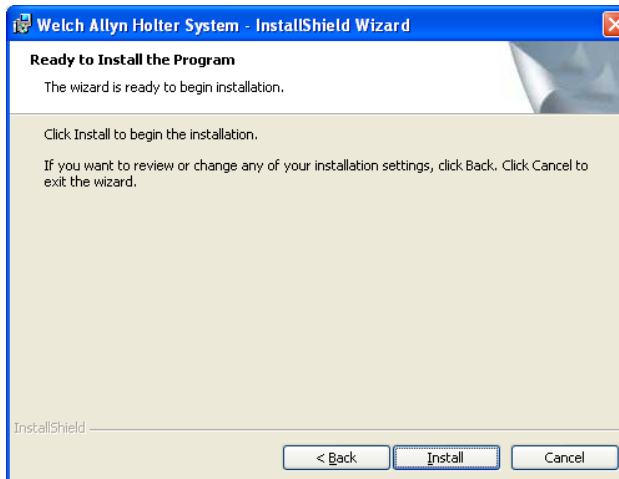
WelchAllyn[®]

Advancing Frontline Care[™]

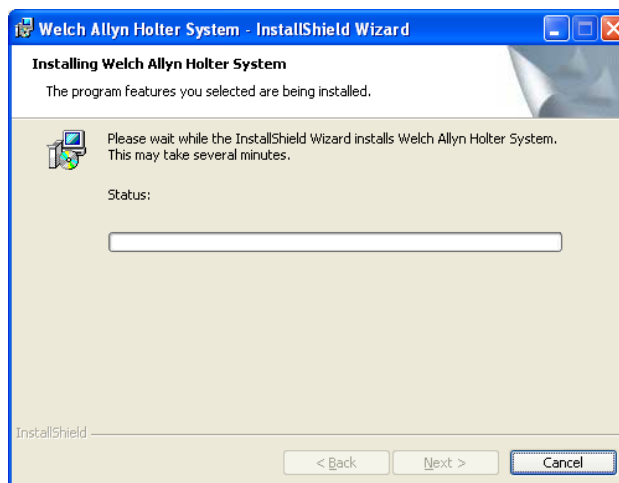
2.4 Click **Next**.



2.5 Click **Next**.



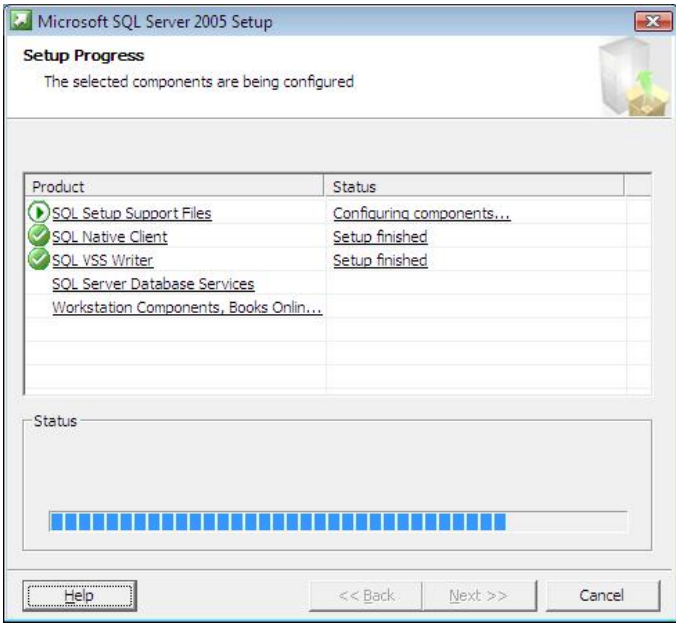
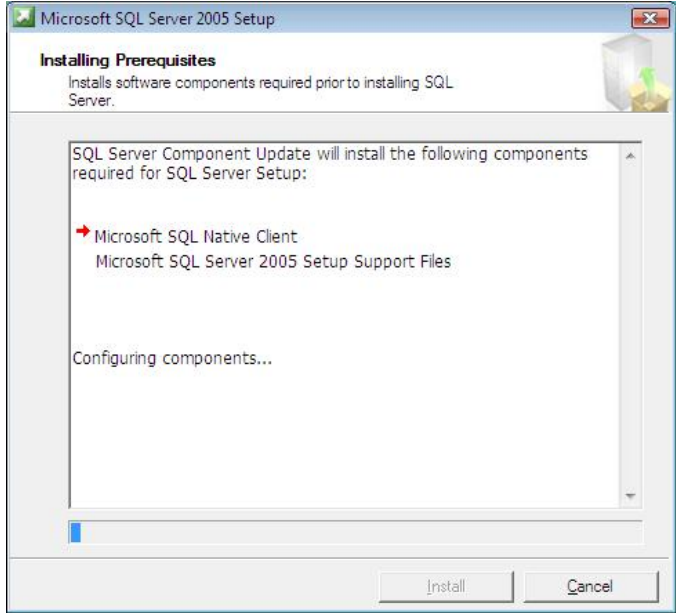
2.6 Click **Install** and the following sequence of screens will appear as the application installs.



WelchAllyn[®]

Advancing Frontline Care[™]

2.7 SQL Server 2005 express will be installed.

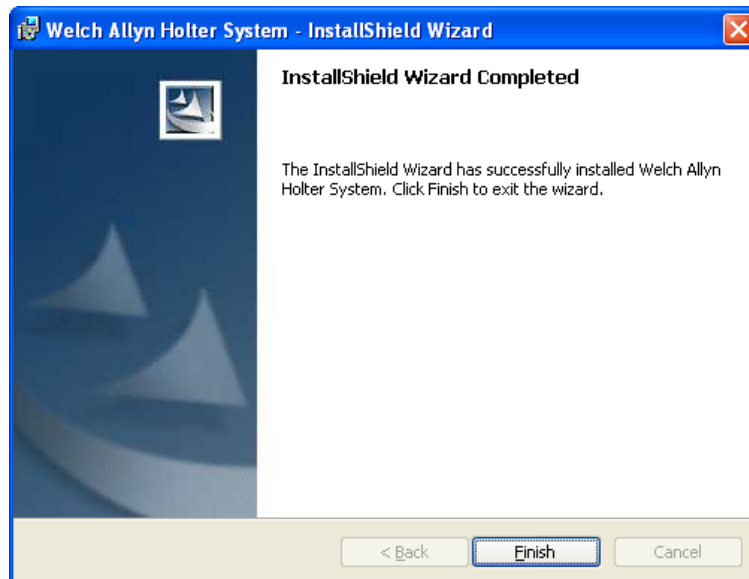


2.8 After the database installation is complete, new files will be copied and the following screens will appear and automatically close when they complete.

```
CA\Users\global\AppData\Local\Temp\{415271F3-0D8D-4287-B6AC-B337C97DED3}\WAMajorRevisionPrep...
Preparing: Please Wait.....
----- Application Path: C:\Program Files\GIMedical\WAHolter\1.1\
----- ProductID: 13
----- Server: 0
----- Source Path: C:\Users\global\Desktop\
----- Current Product ID: 0
----- Current IsMaintenance: CHANGE
----- Database Path: C:\Program Files\GIMedical\WAHolter\1.1\Data\
----- ECG Data Path: C:\Program Files\GIMedical\WAHolter\1.1\Data\Local\
.....
...MAIN - Searching for Older application
...
...OLD App - [Def] Still searching path found
...OLD App - No older application files were found!
...
...MSDE Service Stopped
...MSDE Delete folder: C:\Program Files\Microsoft SQL Server\MSSQL$WAHOLTER\
...MSDE Cannot find SQL folder: C:\Program Files\Microsoft SQL Server\MSSQL$WAH
LIBS\
...MAIN - Building new registry values
...Building Standalone registry
...
...Installation Preparation Process Ended Successfully...
```

```
CA\Program Files\GIMedical\WAHolter\1.1\WACustomInstallApp.exe
Installing: Please Wait...
...Parsing Input Arguments:...
----- Path: C:\Program Files\GIMedical\WAHolter\1.1\
----- ProductID: 13
----- Client: 0
----- DBPath: C:\Program Files\GIMedical\WAHolter\1.1\Data\
----- ECGPath: C:\Program Files\GIMedical\WAHolter\1.1\Data\Local\
----- LanguageCode: 1033
----- Source Disk Path: C:\Users\global\Desktop\
----- Current ProductID: 0
----- Current IsMaintenance: CHANGE
.....
...Standalone product selected with DB=True
...Building Standalone - removing LAN entries
...License File needs to be copied
...License File copied: C:\Program Files\GIMedical\WAHolter\1.1\
```

2.9 Click **Finish** when the following screen appears.



2.10 The Welch Allyn Holter software is now installed.

2.11 Proceed to section 3 to Install USB Bluetooth® Adapter

3. Installing the USB Bluetooth® Adapter

Note: For Systems running Windows 7, **do not** install the Belkin Software. For Windows 7, plug dongle into USB port and Windows 7 will automatically install the drivers. Start the Welch Allyn Holter System and set the Bluetooth Stack selection to “Microsoft” under the Welch Allyn Holter System – System Settings.

Overview: The Bluetooth® adapter allows the Welch Allyn Holter Software to communicate with Holter recorders through a wireless connection.

3.1 Use USB Bluetooth® Adapter Software (Provided on Belkin CD)

Note: DO NOT INSTALL THE BELKIN BLUETOOTH® ADAPTER UNTIL STEP 3.1.6

3.1.1 Insert the **Belkin Bluetooth® Technology USB Adapter** CD and wait for the software to run automatically.



Click on “**Install Software**” to start Install Shield Wizard for the WIDCOMM Bluetooth Software.

3.1.2 The “**Software InstallShield Wizard for Belkin Bluetooth® Software**” window displays.



Click on “**Next**” to begin the installation process.

3.1.3 The “**License Agreement**” window displays.

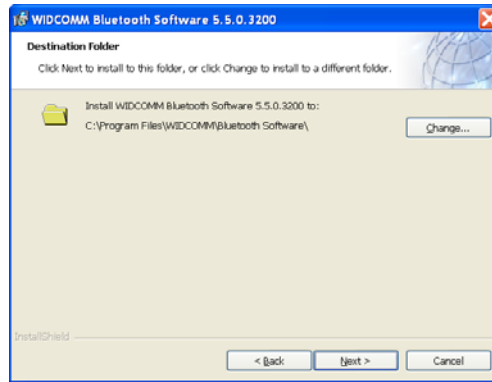


Choose “**I accept the terms in the license agreement**” to accept the license agreement. Click on “**Next**” to continue.



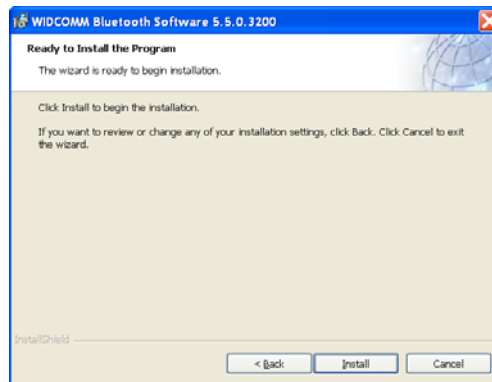
Advancing Frontline Care™

3.1.4 The “Destination Folder” window displays.



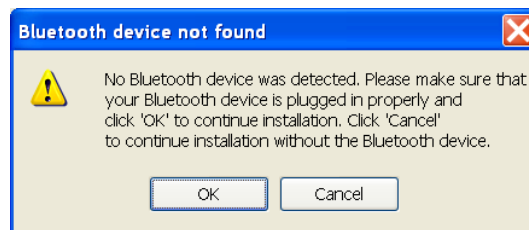
Specify the location where the software files will be installed on your hard drive. It is recommended that you install the software in the default directory “C:\Program Files\Belkin\Bluetooth Software\”. Click on “Next” to continue.

3.1.5 The “Ready to Install the Program” window displays.



Click on “Install” to continue.

3.1.6 The “Bluetooth® Device Not Found” window displays.



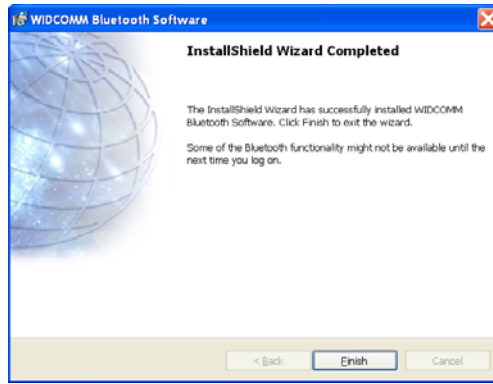
INSTALL THE BELKIN BLUETOOTH® ADAPTER

Click on “OK” to continue loading the drivers, once the installation of the drivers is complete the “InstallShield Wizard Complete” window displays



Advancing Frontline Care™

3.1.7 The “InstallShield Wizard Complete” window displays.



Click “Finish”.

3.1.8 The “Belkin Bluetooth® USB Adapter” window displays.



Click “Finish” to close Belkin Bluetooth® USB Adapter window.

3.1.9 Double Click on the Bluetooth icon at the lower left hand portion of the display..

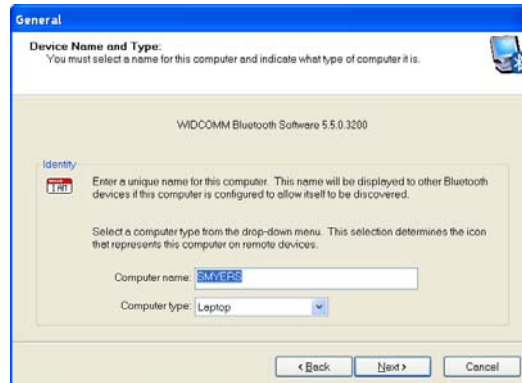


3.1.10 The “Initial Bluetooth Configuration Wizard” window displays.



Click “Next” to continue.

3.1.11 The “Device Name and Type” window displays.



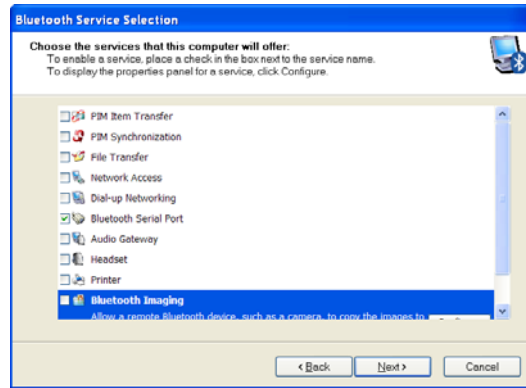
Click “Next” to continue.

3.1.12 The “Initial Bluetooth Configuration Wizard” window displays.



Click “Next” to continue.

3.1.13 The “Choose the services that this computer will offer” window displays.



Verify the check box for the “Bluetooth Serial Port” has a check and all other services are not checked. Click “Next” to continue.

3.1.14 The “Initial Bluetooth Configuration Wizard” window displays.



Click “Skip” to continue.

3.1.15 The “Initial Bluetooth Configuration Wizard” window displays.



Click “Finish”. You have successfully install the Bluetooth hardware and drivers.


3.1.16 Proceed to section 4 to Start WA Holter Application.

4. Activating the WA Holter Application License

You must activate your Holter software within 30 days, or the software will lock itself. The activation message displays each time you launch the software until you activate. The best way to activate your software is through the Internet.

Note: Upgrading from version 1.0.0.2 may prompt the user to re-activate the software.

4.1 Activating through the Internet

4.1.1 Click on the Welch Allyn Holter System ICON  located on the desktop.

4.1.2 The activation message displays.

4.1.3 Select **Yes** or **No**.

- If you select **No**, a message displays reminding you that you must activate within 30 days. (**Caution:** after 30 days, the software will not launch.)
- If you select **Yes**, the system automatically activates itself and the activation screen will not display again. This completes the activation requirement.

4.2 Activating Manually (No Internet Connection)

If the software cannot detect an Internet connection, you must activate the application manually.

4.2.1 Launch the Holter System software. The activation message displays.

4.2.2 Select **Yes** or **No**.

- If you select **No**, a message displays reminding you that you must activate within 30 days. (Caution: after 30 days, the software will not launch.)
- If you select **Yes**, the Manual Activation dialog displays. Click the Print button. Contact Welch Allyn Technical Support (see page ii). You will be asked to provide the information displayed on the printout:
 - ✓ Username
 - ✓ Password
 - ✓ PC Serial Number 1
 - ✓ PC Serial Number 2


4.2.3 Once you receive the Activation Code, type it into the Activation Code box and click Activate. The application launches and the activation screen will not display again. This completes the activation requirement.

Proceed to section 5 to install SD card reader.

5. Install SD Card Reader

Overview: The SD Card Reader allows the Welch Allyn Holter Software to Upload ECG Data from the Holter Recorder using the SD Card.

Insert the USB cable with SD card reader attached into an available USB slot. The system should recognize the device and load the

appropriate drivers. Start the Welch Allyn Holter application. Go to the 'Main Menu'. Double click  which is located in the lower right corner, and search for SD card reader. Select the appropriate drive and click 'OK'.

Proceed to section 6 to USB Hibernation.

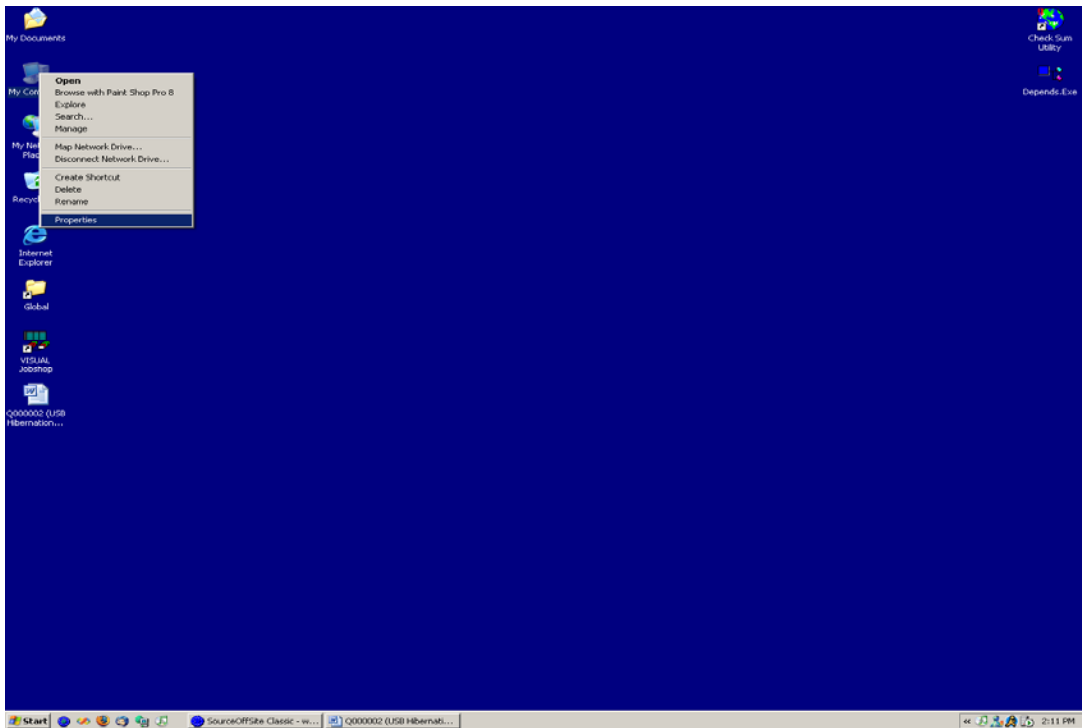
WelchAllyn[®]

Advancing Frontline Care™

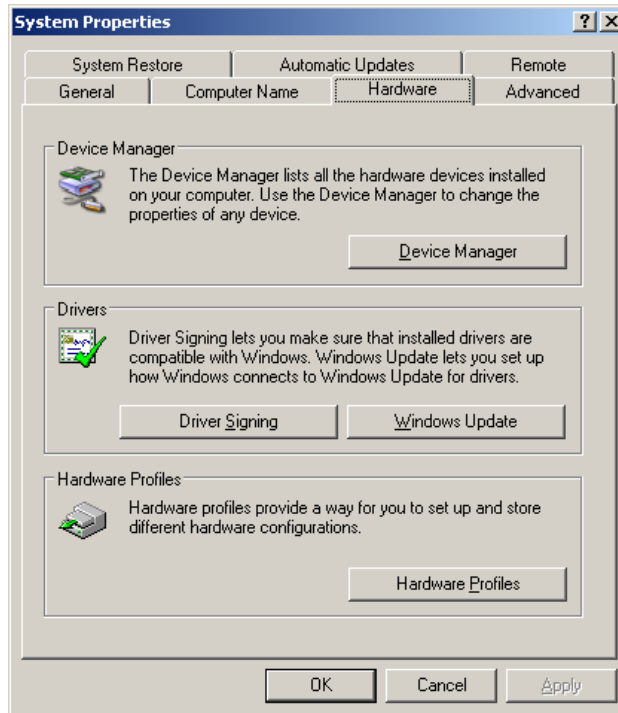
6. USB Hibernation

Overview – Most computers automatically turn off power (Hibernate) to the USB ports if the port has not been used in some time. The Welch Allyn system requires that USB ports remain active at all times for the USB Bluetooth® Adapter and SD Card reader to operate correctly. Use these steps to disable USB hibernation:

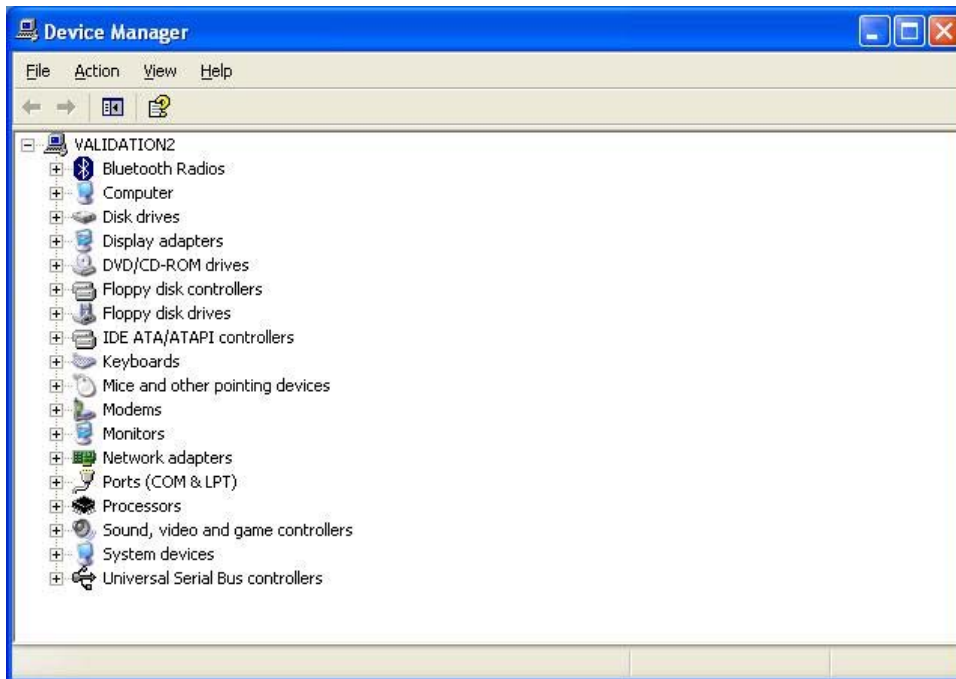
6.1 Right click **My Computer** on the Desktop and select **Properties**.



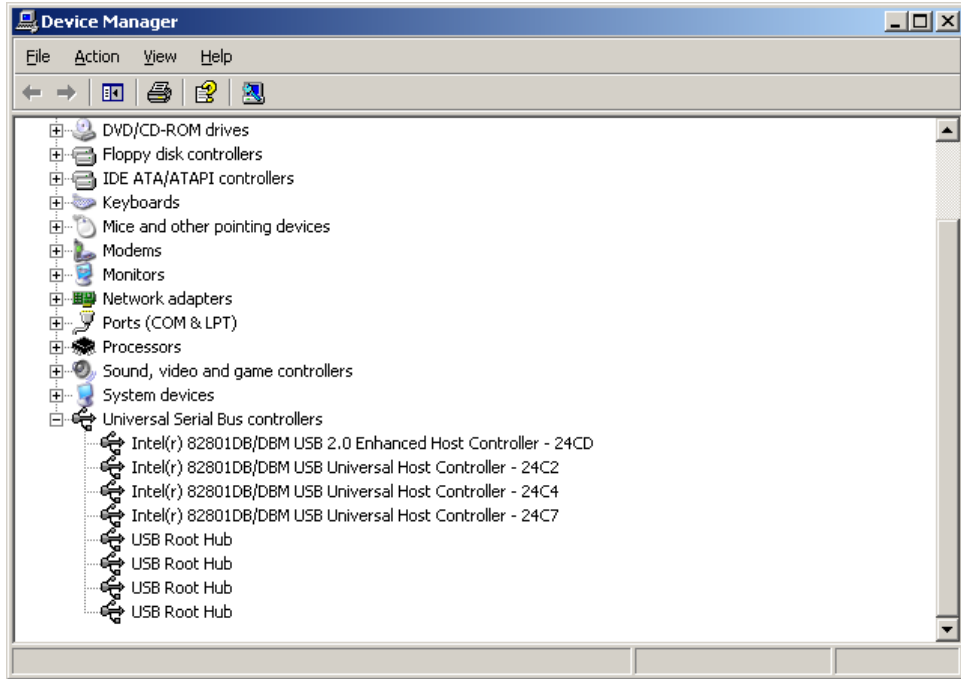
6.2 Select the **Hardware** tab on the **System Properties** screen.



6.3 Click the **Device Manager** button.



6.4 Click the plus sign (+) next to **Universal Serial Bus Controllers**.

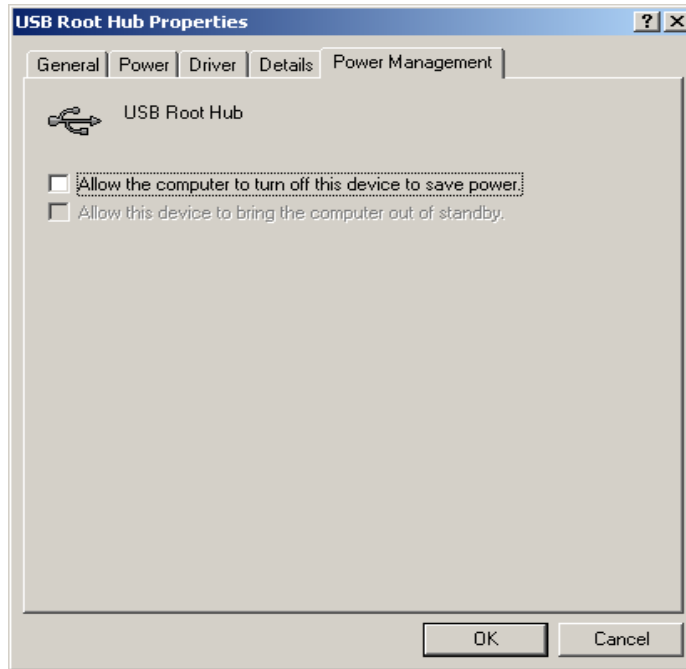


6.5 Complete the following steps for each of the USB Root Hub Entries.

- o right click
- o select **Properties**
- o select **Power Management** tab



6.6 Uncheck the **Allow the computer to turn off this device to save power** check box and click **OK**.



6.7 Once you have completed all USB Root Hub modifications you can use the Welch Allyn Holter application.

6.8 Proceed to section 7 to Complete PCH100/200 Standalone Installation Check-off Sheet

7. Complete PCH100/200 Standalone Installation Check-off Sheet

Please complete the PCH100/200 Standalone Installation Check-off Sheet on the following page and return to Global Instrumentation, LLC.

Note: Reference WA Holter System Instructions for Use for completing steps 10-14 on Installation Check –Off Sheet

Fax: 1-315-682-0278

Mail: Global Instrumentation, LLC
8104 Cazenovia Road
Manlius, New York, 13104, USA
Attn: Service

WelchAllyn®

Advancing Frontline Care™

PCH100/200 Standalone Installation Check-off Sheet

Customer Information

1. Name: _____
2. Contact Person: _____
3. Phone Number: _____
4. Address: _____
5. City: _____
6. State: _____
7. Country: _____
8. Installation Completed By: _____

Evaluate PC System

1. Determine Operating System: _____
2. Determine Operating System Service Pack: _____
3. Determine if Bluetooth® Radio Already Installed:

4. Determine if McAfee Antivirus Program Installed: Yes No Version: _____

Installation

Passed

- | | | |
|--|--|------------|
| 5. Install Welch Allyn Holter System: | <input type="checkbox"/> Yes <input type="checkbox"/> No | |
| 6. Install and Configure USB Bluetooth® Adapter: | <input type="checkbox"/> Yes <input type="checkbox"/> No | |
| 7. Activate Product License: | <input type="checkbox"/> Yes <input type="checkbox"/> No | S/N: _____ |
| 8. Install SD Card Reader: | <input type="checkbox"/> Yes <input type="checkbox"/> No | |
| 9. Disable USB Hibernation: | <input type="checkbox"/> Yes <input type="checkbox"/> No | |
| 10. Start Up Welch Allyn Holter Application: | <input type="checkbox"/> Yes <input type="checkbox"/> No | |
| 11. Perform Test Startup: | <input type="checkbox"/> Yes <input type="checkbox"/> No | |
| 12. Perform SD Card Upload: | <input type="checkbox"/> Yes <input type="checkbox"/> No | |
| 13. Edit Report: | <input type="checkbox"/> Yes <input type="checkbox"/> No | |
| 14. Print Report: | <input type="checkbox"/> Yes <input type="checkbox"/> No | |